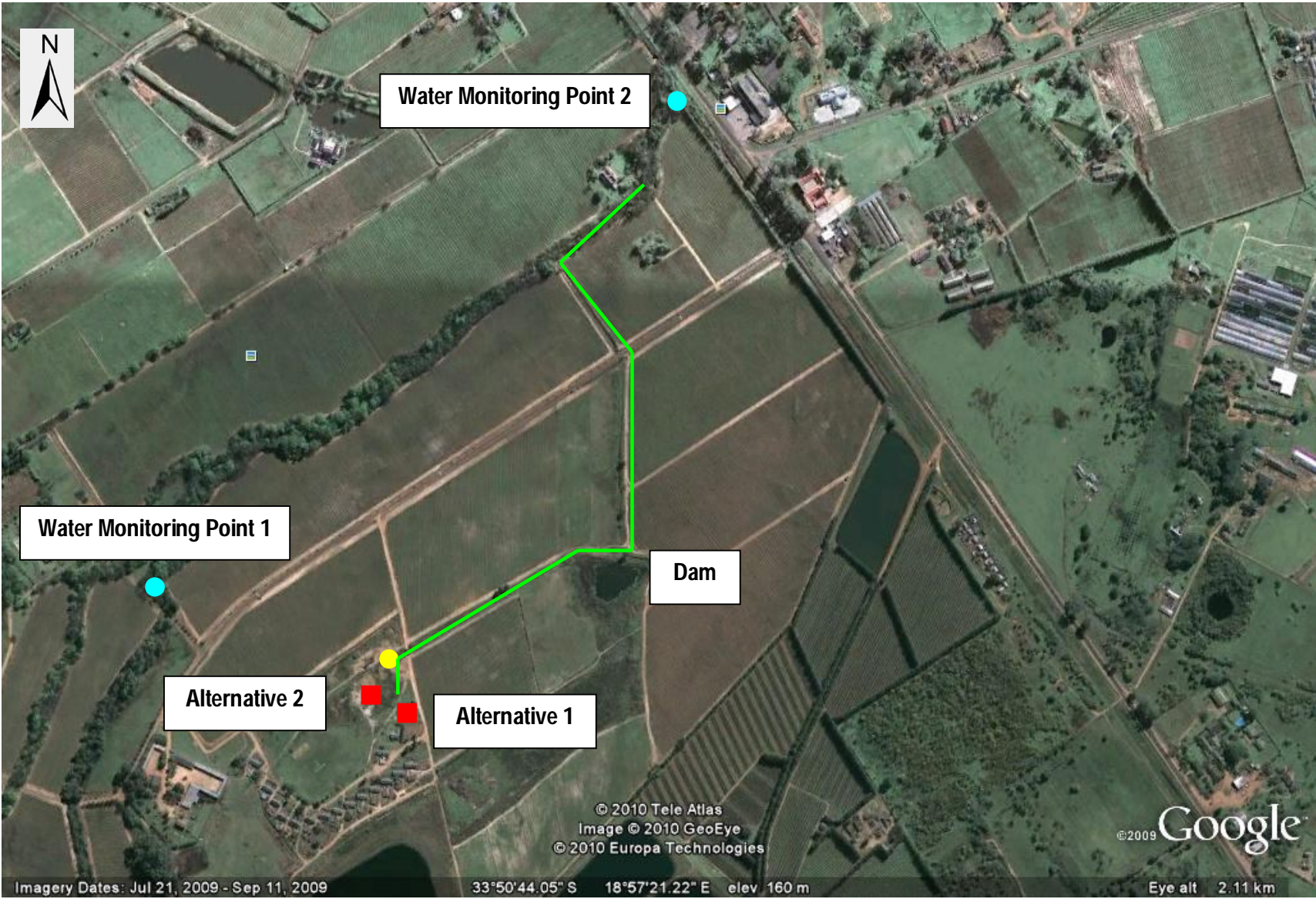
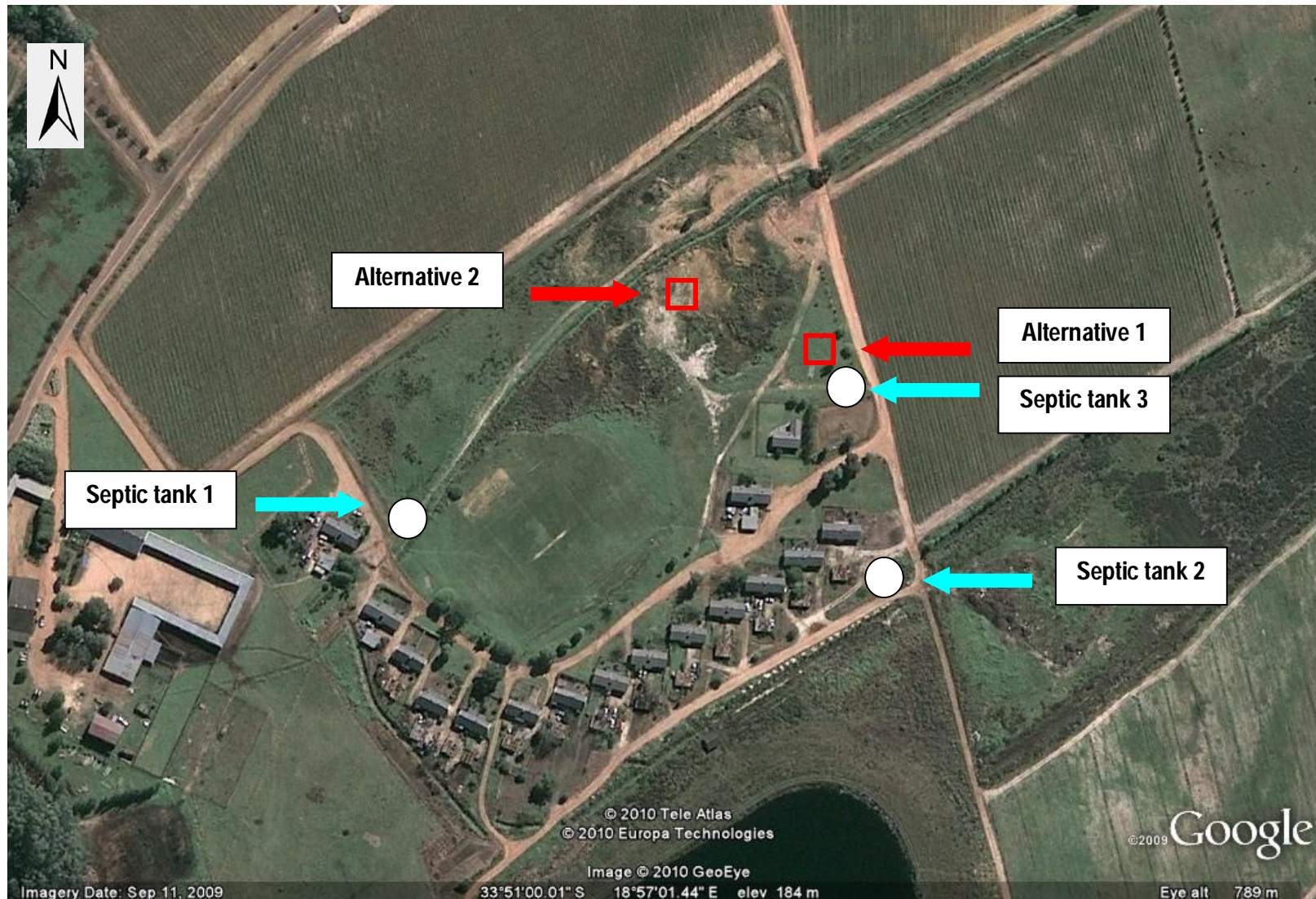




**Figure 1:** Location Alternatives 1 and 2 for the proposed WWTW are indicated in relation to the 30 housing units. The building in close proximity to Alternative 1 is a community hall. Access to the site is via existing access roads, visible on the figure.



**Figure 2:** Existing (blue circles) and future (yellow circle) water monitoring points in relation to the proposed waste water treatment works (Location Alternatives 1 and 2 indicated by red squares). The green line indicates the movement of treated water from the WWTW to the stream – to the dam – and the overflow into another stream.



**Figure 3:** The existing septic tanks (white circles) are shown in relation to the proposed alternative locations (red squares) for the waste water treatment works (not to scale)